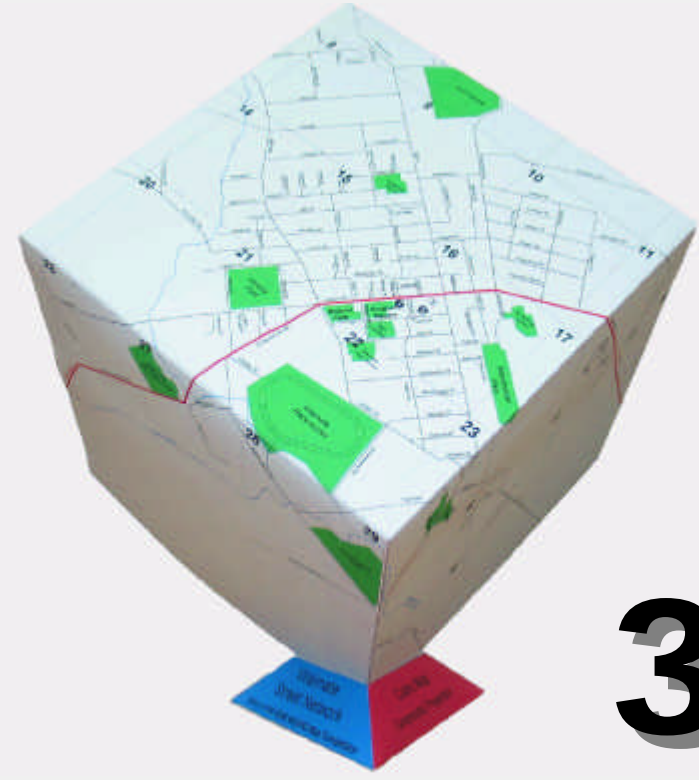


Waimate Street Network



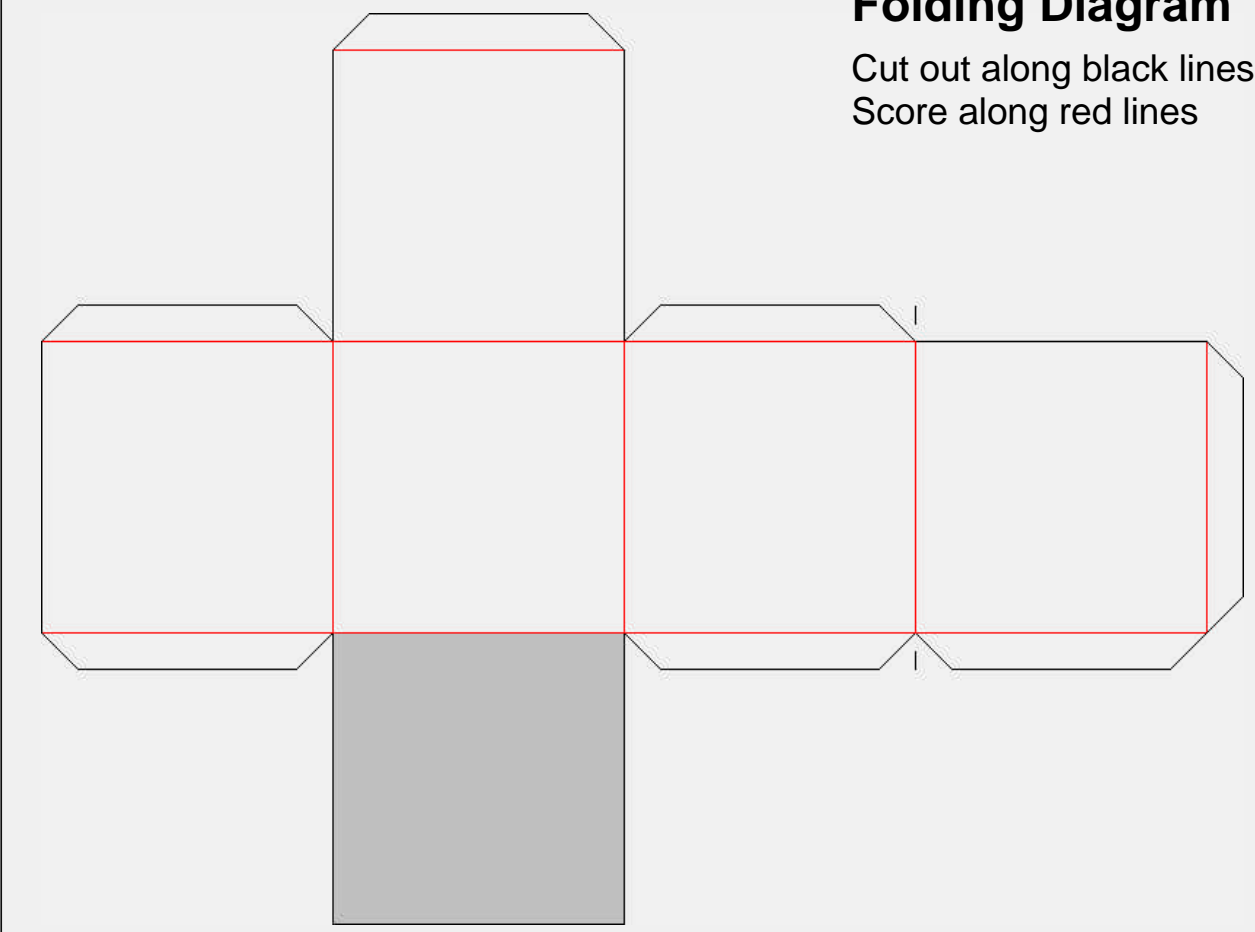
3D Map

Assembling Some assembly tips:

- * Precision and patience matter most. Small errors can accumulate and prevent fitting the last faces
- * Using a dull blade guided by ruler or straightedge, lightly and carefully score all folding lines before cutting. This will make creasing easier and more precise
- * A utility knife guided by a straightedge is more precise than scissors, but please be careful! To keep better alignment, score or cut as many lines as possible without moving the straightedge
- * Check every white tab's fit before applying glue
- * A single face (shaded in the preview pattern) should be glued last; it has no tabs, so must be aligned by sight
- * Expect to spend 15-20 minutes on the constructing this cube map

Folding Diagram

Cut out along black lines
Score along red lines



Waimate Street Network

Waimate Information Centre
75 Queen St, Waimate.
Ph (03) 689 7771 - Fax (03) 689 7791
Email: info@waimatedc.govt.nz
Website: www.waimate.org.nz

MAP LEGEND

NORTH
Scale 1:15000

- State Highways
- Local Sealed Roads
- Local Metal Roads
- Waterways
- Schools and Parks

INDEX

Allan St — 8 Andrew St — 14 Augustine St — 10 Bakers Rd — 2 Balmoral St — 14 Bathgates Rd — 12 Belt St — 15 Benton St — 15 Bond St — 10 Browns Ave — 15 Browns Rd — 2 Butchers Ln — 9 Caernarvon St — 11 Cameron St — 16 Cardiff St — 11 Carlisle St — 10 Castle St — 10 Centre St — 8 Churchill Pl — 10 Constitution St — 9 Coursiers Rd — 1 Dash St — 15 Dixon St — 14 Dobson St — 23 Dunham St — 10 Easton St — 16 Edinburgh St — 9 Edward St — 22 Elizabeth St — 15 Exeter St — 10 Fitzmaurice Rd — 2 Garlands Rd — 13 George St — 15 Glasgow St — 15 Goldsmith St — 15 Gorge Rd — 21 Grace St — 14 Graham St — 16 Grignon St — 16 Hannifins Rd — 10 Hakataramea Highway — 26 Harris St — 15 Hayes St — 14 Herbert St — 15 High St — 9 Hillary St — 21 Hodges Rd — 26 Holmes St — 22 Horgans Rd — 29 Hughes St — 9 Hunts Rd — 7 Innes St — 15 James St — 24 John St — 16 Kennedy Crs — 16 King St — 8 Leonard St — 16 Manchester St — 8 Manchesters Rd — 18 Manse St — 15 Mason Cemetery Rd — 14 Mary St — 15 Massey St — 21 Maude St — 9 Maytown Rd — 4 McLay Pl — 15 McNamaras Rd — 23 Meyer St — 15 Michael St — 18 Milford St — 11 Mill Rd — 15 Milton Ave — 16 Minnie St — 18 Molloys Rd — 23 Montgomery St — 11 Moore Rd — 6 Moonhouse St — 22 Morrison St — 14 Mt John Rd — 26 Naylor St — 21 Nelson St — 9 Notions Reserve Rd — 4 Opie St — 14 Oxford St — 10 Park Rd — 23 Parsonage Rd — 9 Paul St — 16 Pembroke St — 11 Pitman Pl — 21 Point Bush Rd — 20 Price St — 21 Princes St — 14 Queens St — 15 Queens Tce — 7 Racecourse Rd — 22 Rattray Pl — 15 Regent St — 10 Rhodes St — 15 Rugby St — 16 Saul Shives Pl — 21 Settlement Rd — 27 Shearman St — 15 Short St — 2 Slaughteryard Rd — 30 Sligh St — 16 Smith St — 14 Studholme St — 16 Taylors Rd — 27 Tennant St — 21 Timaru Rd — 11 Town Belt — 15 Victoria St — 9 Victoria Tce — 16 Waihao Back Rd — 28 Waimate Hunter Rd — 2 Wall St — 16 Whales St — 6 William St — 22 William St — 22 Victoria Tce — 9 Information Centre — 16 Supermarket — 16 Toilets — 16	1 2 3 4 5 6 7 8 9 10 11 12 13 14 15 16 17 18 19 20 21 22 23 24 25 26 27 28 29
---	---

Cubic Map
Gnomonic Projection

Waimate Street Network
Entry in the 2006 MUGNZ Map Competition

Created By:
Andrew Hare
GIS Administrator
Waimate District Council

Projection: Longitude/Latitude (WGS 84)

Latitude: 44° 43' 17" 680512"

Longitude: 171° 3' 0.56556"